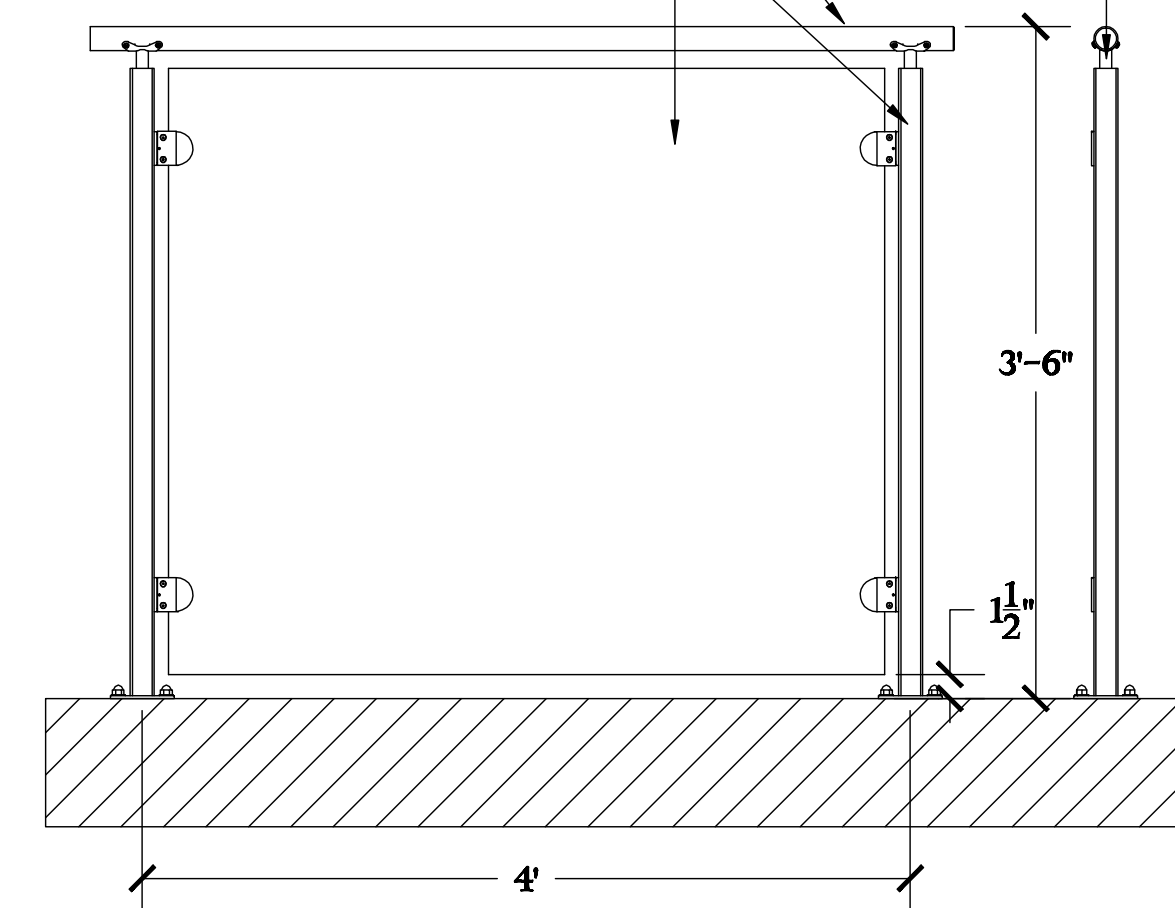
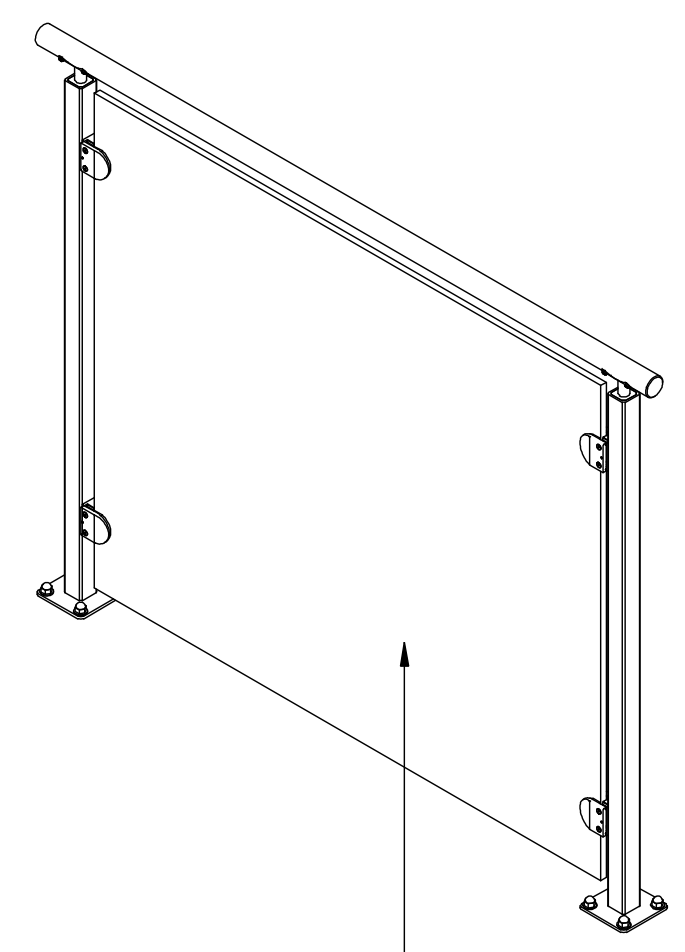


NOTE: FOR INTERIOR APPLICATIONS AND NON CORROSIVE ENVIRONMENTS, T-304 S.S. IS RECOMMENDED. FOR EXTERIOR APPLICATIONS WITHIN 15 MILES OF THE COAST OR IN A CORROSIVE ENVIRONMENT, T-316 S.S. IS RECOMMENDED.

TOP CAP ATTACHMENT: 3/4"Ø STEM W/ 4 HOLE SADDLE.  
 TOP CAP: 1 1/2"Ø 11GA. S.S. TUBE W/ #3 BRUSH FINISH.  
 POST: 1 1/2" SQUARE 11GA. S.S. TUBE W/ #3 BRUSH FINISH.  
 GLASS PANEL: 1/2" THICK TEMPERED.

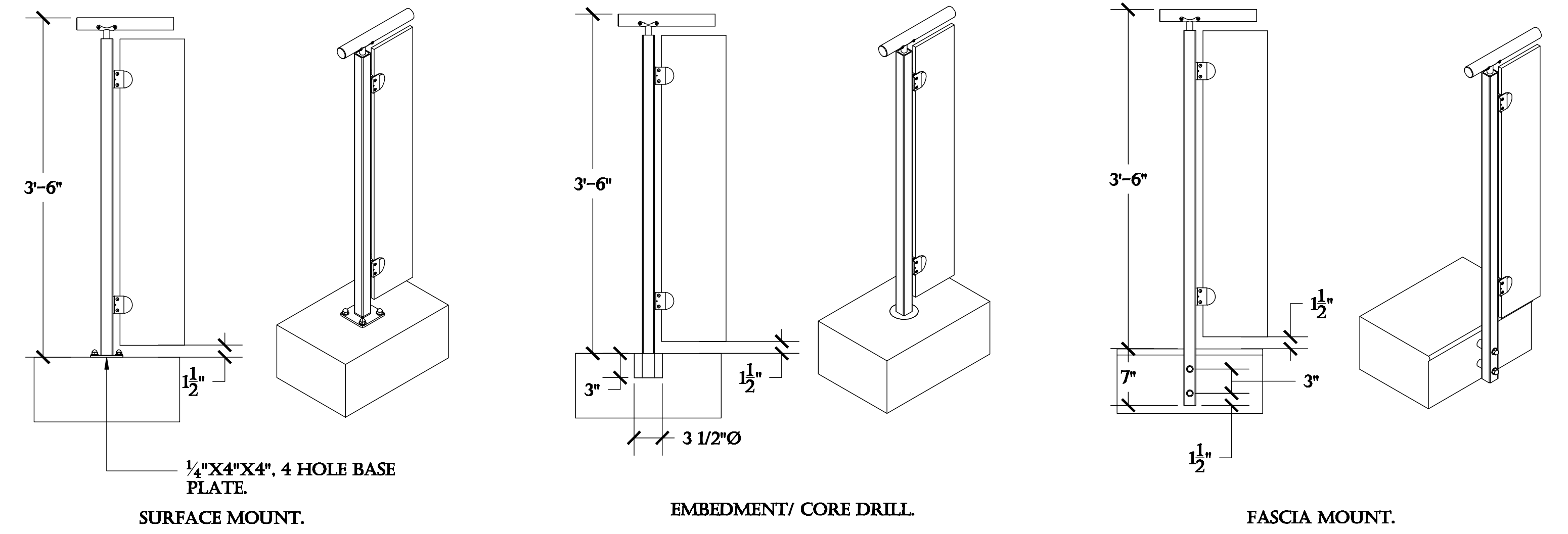


MAXIMUM SPACING OF POST IS APPROX. 48" O/C.



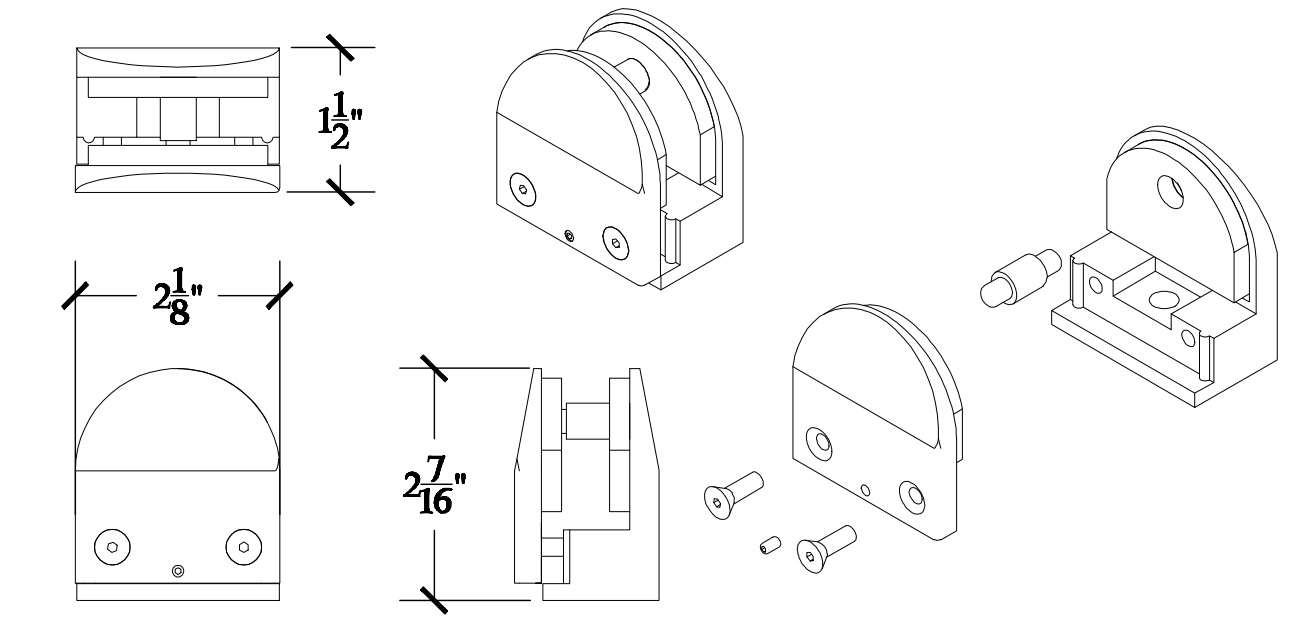
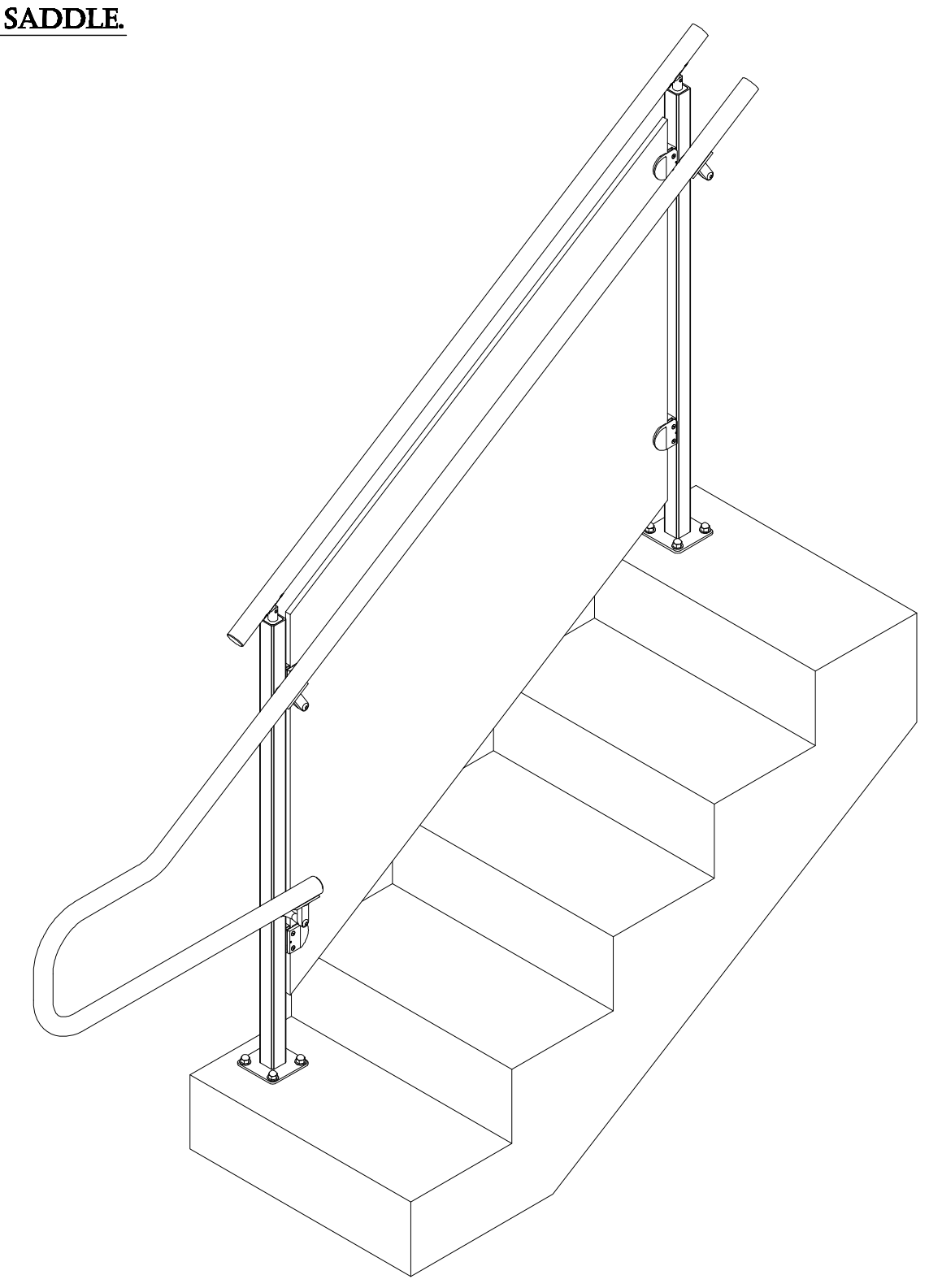
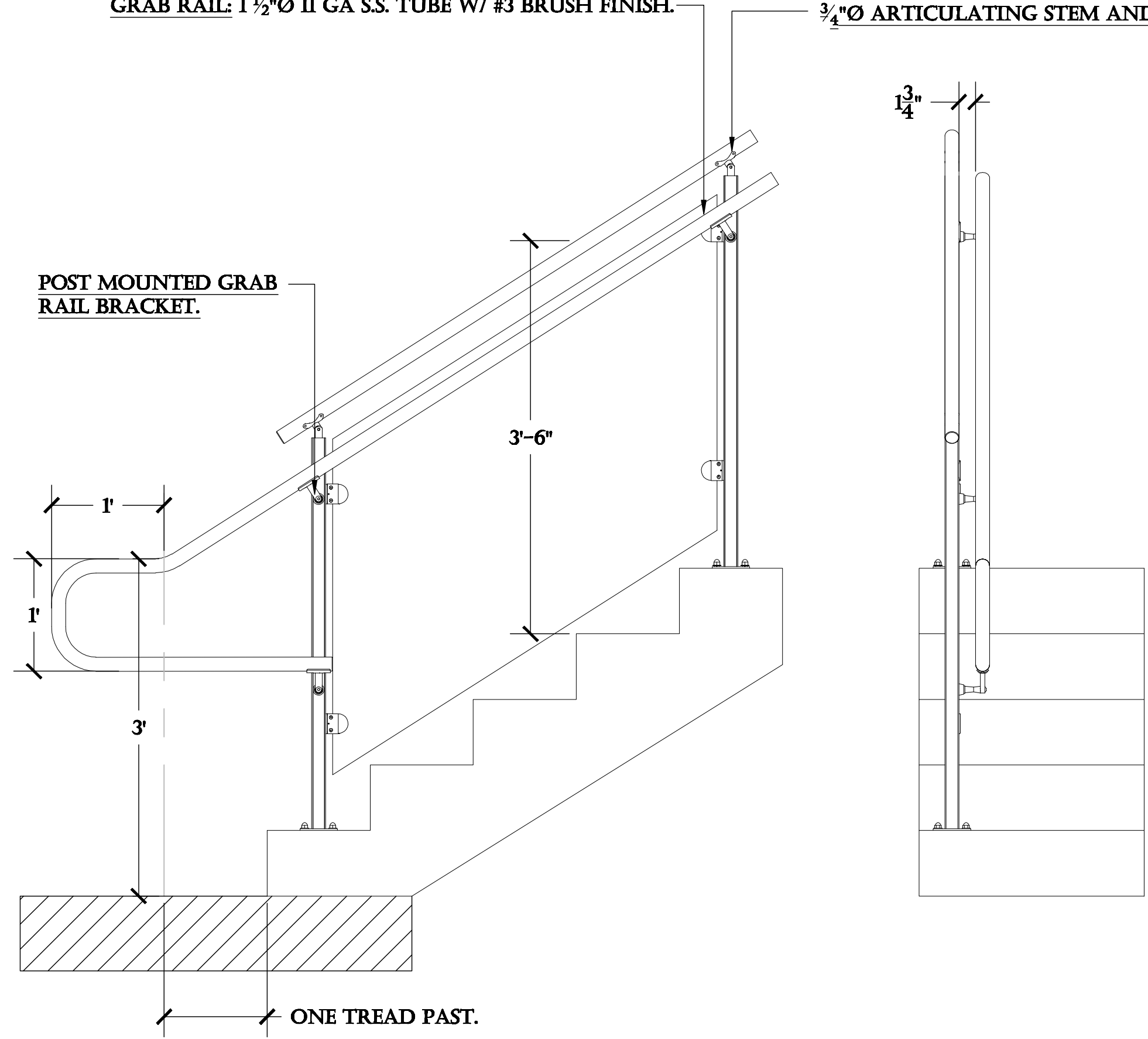
PANEL INFILL: 1/2" THICK CLEAR OR SMOKED TEMPERED GLASS, PERFORATED METAL, OR ACRYLIC.  
 \*VINYL GRAPHICS ALSO AVAILABLE UPON REQUEST.

**SPG2-2000 LEVEL 42" GUARD RAILING.** SCALE: 1" = 1'

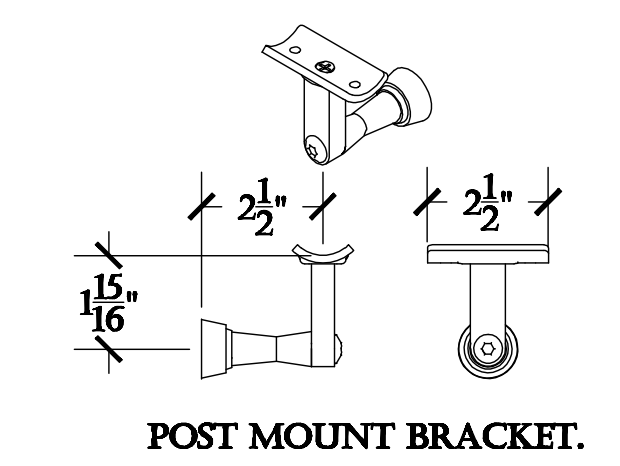


**SPG2-2000 TYPICAL MOUNTING OPTIONS.** SCALE: 1" = 1'

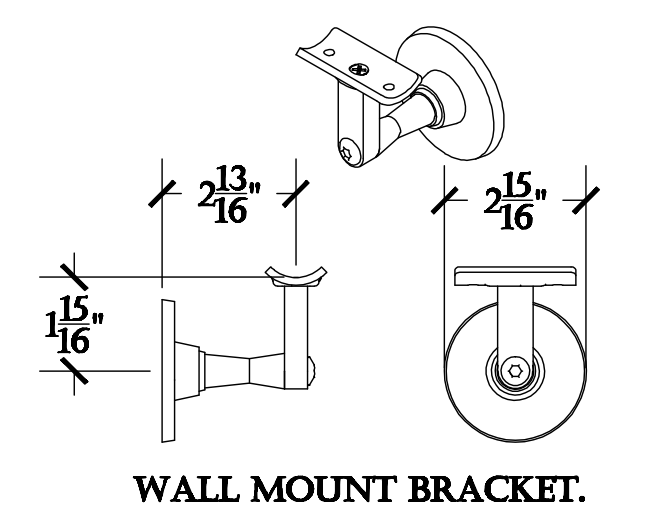
GRAB RAIL: 1 1/2"Ø 11 GA S.S. TUBE W/ #3 BRUSH FINISH.  
 3/4"Ø ARTICULATING STEM AND 4 HOLE SADDLE.



**GLASS CLAMP DETAIL.** SCALE: 6" = 1'



\*ATTACHES W/ 3/8" MECHANICAL FASTENER.



**GRAB RAIL BRACKET DETAIL.** SCALE: 3" = 1'

**SPG2-2000 42" STAIR GUARD RAILING.** SCALE: 1" = 1'

PRODUCT: SPG2-2000 S.S. CABLE RAILING SYSTEM.  
 CONTENT: SPG2-2000 STANDARD SYSTEM DETAILS.  
 DRAWN BY: KELLER, C.  
 DATE: 08-23-11

PROPRIETARY AND CONFIDENTIAL.  
 THE INFORMATION CONTAINED IN THIS DRAWING IS THE SOLE PROPERTY OF SECO SOUTH INC. ANY REPRODUCTION IN PART OR AS A WHOLE WITHOUT THE WRITTEN PERMISSION OF SECO SOUTH INC. IS PROHIBITED.

2111 34TH WAY  
 LARGO, FL 33771  
 PH: 727-536-1024  
 FAX: 727-539-8314  
 SALES@SECOOUTH.COM

